



## Ride On Newsletter

May 2025

### Ride On Bus Service Changes Begin Sunday, June 29, 2025, to Ensure Consistent Service Amidst Metrobus Changes and Ride On Reimagined Year 1 Implementation

The Montgomery County Department of Transportation (MCDOT) will adjust several Ride On bus route schedules, add the new Route 40, and discontinue Route 10 on Sunday, June 29, to ensure consistent service amidst Metro service changes due to the Better Bus Network implementation and Ride On Reimagined Year 1 Implementation. The new schedules are available at [rideonbus.com](https://rideonbus.com) and will be available in print by May 31st.



Here are details of each route affected:

- **Route 10:** Service will be discontinued and replaced by Metrobus Routes M12, M42, M44, & M60.
- **Route 29:** Trip time adjustments for efficiency. Weekdays, Saturdays, and Sundays.
- **Route 34:** In response to community feedback, Route 34 will continue to provide service between Wheaton, Medical Center, and Bethesda. The current routing between Wheaton and Bethesda will remain the same. The

following changes to other parts of the route will take effect on June 29, 2025:

- Route 34 will no longer provide service between Bethesda and Friendship Heights. Bus service on Wisconsin Avenue from Bethesda to Friendship Heights will be provided by new Metrobus route D96. For more information on D96, please see the [WMATA route profile](#).
- Route 34 will no longer provide peak-period service between Aspen Hill and Wheaton. Ride On Route 41, which currently provides service between Aspen Hill and Glenmont, will be extended south to Wheaton via Weller Road, Connecticut Avenue, Plyers Mill Road, and Georgia Avenue.
- **\*NEW\* Route 40:** Will replace portions of Metrobus Routes Q2, Q4, and Q6. Route 40 will operate between Montgomery College-Rockville (MC-R) and Wheaton Metro station. Service span and headways will be comparable to current Q2/Q4/Q6 service between MC-R and Wheaton. Certain trips will end at Rockville Metro (early AM, late PM, all Sunday service).
- **Route 41:** Will be extended south to Wheaton Metro Station to replace Route 34 and L8 service on parts of Connecticut Avenue. All-day and weekend service on Plyers Mill Road between Kensington and Wheaton will also be added. Service to Glenmont will continue.
- **Route 42:** Service to Boiling Brook Parkway & Rocking Horse Road and to and from the William F. Bolger Center/U.S. Postal Service training facility will be discontinued.
- **Route 43:** Trip time adjustments for efficiency on weekdays, Saturdays, and Sundays.
- **L8:** WMATA will discontinue Route L8. Ride On will no longer provide weekend service on this route. Find alternate routes [here](#).
- **T2:** WMATA will change the route number of Route T2 to M82 and provide service on weekdays, Saturdays, and Sundays. Ride On will no longer provide weekend service on this route.

More information on the changes to Routes 10, 34, New 40, 41, 42, L8 & T2 can be found in the PDF linked [here](#).

## MCDOT Ride On 50th Anniversary Art Contest Winners Announced



MCDOT Ride On is excited to announce the winners of our 50th Anniversary Art Contest, which celebrated 50 years of Ride On service in Montgomery County. The contest was open to all Montgomery County middle school students and ran from March 15 - April 15, 2025.

After reviewing 96 entries, the winning entry received a **\$100 gift card**, **second place entry received a \$75 gift card**, and **third place received a \$50 gift card**. The first place winner's artwork will be displayed inside all Ride On buses.

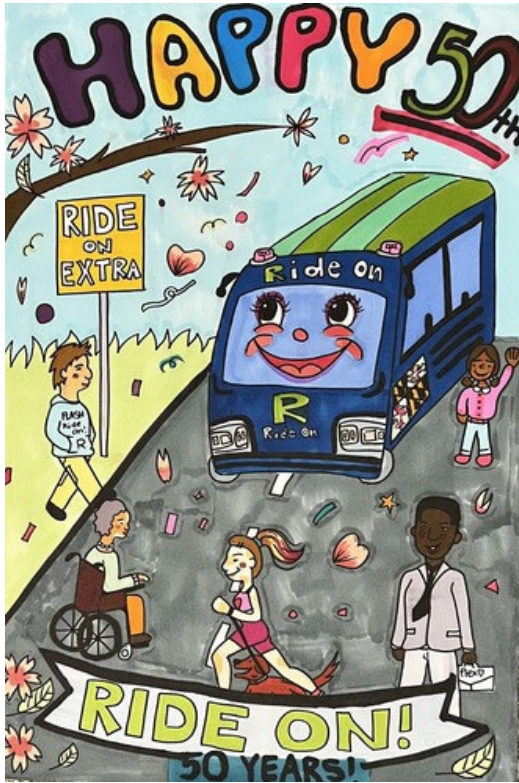
Winners and their art are listed below.



**1st Place**

**Laura Jin**

**Dr. Martin Luther King,  
Jr. Middle School**



**2nd Place**

**Ava Lutgendorf**

**North Bethesda Middle School**



**3rd Place**

**Jenny Gong**

**Rocky Hill Middle School**

Finalists' art will be featured alongside the top three winners on an art tour around Montgomery County government buildings. The first stop in that tour will be hosted from May 14 - 27 at the Wheaton Headquarters Building at 2425 Reedie Drive. Additional stops in the art tour will be announced in advance of their showing dates. All winners and their art can be found [on the Ride On website](#).



Finalists are listed below.

- **Leia Baudoin**, Rocky Hill Middle School
- **Arzo Rahimi**, Takoma Park Middle School
- **Benjamin Li**, Herbert Hoover Middle School
- **Carina Araujo**, Barnesville School of Arts and Sciences
- **Piper Russell**, Thomas W. Pyle Middle School
- **Saanvi Lanke**, Shady Grove Middle School
- **Ahyoon Kim**, Thomas W. Pyle Middle School

**Herbert Hoover Middle School** was the school with the most entries (24) and received a \$500 gift card for art supplies. A special thank you to **Mr. Brian Ostry** whose class participated in the contest and made up the majority of the school's entries.

The Ride On marketing team would also like to thank **Donna Kleffman**, Coordinator of Student Leadership and Service Learning (SSL) at MCPS for her help ensuring each participant received SSL hours for their entry.

Thank you to everyone who participated in this year's contest. Your creativity brought joy and color to Ride On's 50th Anniversary celebrations, and we are proud to showcase your work.

## **Montgomery County's US 29 Flash Bus Rapid Transit Plans Howard County Extension in 2026**



Montgomery County Executive Marc Elrich and Howard County Executive Calvin Ball announced on Tuesday, May 7 a partnership to expand the US 29 Flash Bus Rapid Transit (BRT) service into Howard County by 2026. The project will build upon Montgomery County's first BRT corridor, known as Flash, and expand it north to serve four proposed stops in Howard County.

Once completed, this would mark the first BRT service for Howard County, offering high-frequency transit that connects riders to major employment and activity centers across both counties. The extended service would enhance regional accessibility and provide connections to Metrorail, MARC Train and the future Purple Line. The [US 29 Flash](#) service currently runs between Downtown Silver Spring and Briggs Chaney with weekday rush-hour service to Burtonsville. The project will add four additional bus stops on the north end of the route in Howard County and provide Flash BRT service to these stops during weekday rush-hour periods.

"This portion of US 29 between Columbia and Silver Spring will ultimately connect to the larger Flash BRT network, which includes seven additional corridors and more than 100 stops across Montgomery County," said County Executive Elrich. "Flash BRT enables us to support higher-density development while strengthening connections between Montgomery and Howard counties. It's a smart, sustainable investment that promotes economic growth, advances equity and moves people efficiently and responsibly."

Earlier this year, Montgomery and Howard Counties entered a multi-year memorandum of understanding to initiate the Flash BRT partnership. On Tuesday, County Executives Elrich and Ball jointly signed a letter of intent outlining project goals and reaffirming their commitment to ongoing collaboration.

"First envisioned more than a decade ago, this Flash Bus Rapid Transit service will be a gamechanger for our economy, workforce and residents," said County Executive Ball. "We are delivering on this vision to deliver strong transit connections that are vital to supporting the needs of our residents, workforce and businesses. We know that to build a resilient and inclusive future, we must invest in affordable, efficient and high-quality public transportation that meets the needs of our community. I want to thank my fellow County Executive Marc Elrich and our federal and state partners for realizing this project's importance to Howard County and for helping make it a reality."

Flash BRT is a fast, reliable and efficient transit system that will provide high-quality transit service along the US 29 corridor. Through this partnership, the existing US 29 Flash route between Silver Spring and Burtonsville will be expanded to include new stations in Maple Lawn, Downtown Columbia and the Johns Hopkins Applied

"We're excited to expand the US 29 Flash service to our neighbors in Howard County," said Joana Conklin, Montgomery County Department of Transportation rapid transit system development manager. "Thanks to a \$3.3 million federal grant and matching funds from Howard County, we're able to invest in the new Flash buses needed to make this service extension a success. Taking a regional view when planning transit is essential to creating a connected, efficient and equitable network that meets the needs of all our communities."

**LEGEND**

**ROUTE IN SERVICE**  
 ORANGE LINE 20

**PLANNED ROUTES**  
 NORTH BETHESDA  
 NEW HAMPSHIRE AVE  
 WISCONSIN AVE  
 RANDOLPH ROAD  
 UNIVERSITY BLVD  
 EXTENSION TO HOWARD COUNTY AND MOUNT VERNON COLLEGE (TODAY PARK)

**ROUTES IN DESIGN**  
 MD 301  
 VEIRS MILL ROAD

**IN-SERVICE STOPS**  
 PLANNED STOPS  
 METRO STATION  
 PARK AND RIDE  
 TRANSIT CENTER

**FLASH LINES INTERSECT**  
 FLASH LINE 1  
 FLASH LINE 2  
 FLASH LINE 3  
 FLASH LINE 4  
 FLASH LINE 5  
 FLASH LINE 6  
 FLASH LINE 7  
 FLASH LINE 8  
 FLASH LINE 9  
 FLASH LINE 10  
 FLASH LINE 11  
 FLASH LINE 12  
 FLASH LINE 13  
 FLASH LINE 14  
 FLASH LINE 15  
 FLASH LINE 16  
 FLASH LINE 17  
 FLASH LINE 18  
 FLASH LINE 19  
 FLASH LINE 20  
 FLASH LINE 21  
 FLASH LINE 22  
 FLASH LINE 23  
 FLASH LINE 24  
 FLASH LINE 25  
 FLASH LINE 26  
 FLASH LINE 27  
 FLASH LINE 28  
 FLASH LINE 29  
 FLASH LINE 30  
 FLASH LINE 31  
 FLASH LINE 32  
 FLASH LINE 33  
 FLASH LINE 34  
 FLASH LINE 35  
 FLASH LINE 36  
 FLASH LINE 37  
 FLASH LINE 38  
 FLASH LINE 39  
 FLASH LINE 40  
 FLASH LINE 41  
 FLASH LINE 42  
 FLASH LINE 43  
 FLASH LINE 44  
 FLASH LINE 45  
 FLASH LINE 46  
 FLASH LINE 47  
 FLASH LINE 48  
 FLASH LINE 49  
 FLASH LINE 50  
 FLASH LINE 51  
 FLASH LINE 52  
 FLASH LINE 53  
 FLASH LINE 54  
 FLASH LINE 55  
 FLASH LINE 56  
 FLASH LINE 57  
 FLASH LINE 58  
 FLASH LINE 59  
 FLASH LINE 60  
 FLASH LINE 61  
 FLASH LINE 62  
 FLASH LINE 63  
 FLASH LINE 64  
 FLASH LINE 65  
 FLASH LINE 66  
 FLASH LINE 67  
 FLASH LINE 68  
 FLASH LINE 69  
 FLASH LINE 70  
 FLASH LINE 71  
 FLASH LINE 72  
 FLASH LINE 73  
 FLASH LINE 74  
 FLASH LINE 75  
 FLASH LINE 76  
 FLASH LINE 77  
 FLASH LINE 78  
 FLASH LINE 79  
 FLASH LINE 80  
 FLASH LINE 81  
 FLASH LINE 82  
 FLASH LINE 83  
 FLASH LINE 84  
 FLASH LINE 85  
 FLASH LINE 86  
 FLASH LINE 87  
 FLASH LINE 88  
 FLASH LINE 89  
 FLASH LINE 90  
 FLASH LINE 91  
 FLASH LINE 92  
 FLASH LINE 93  
 FLASH LINE 94  
 FLASH LINE 95  
 FLASH LINE 96  
 FLASH LINE 97  
 FLASH LINE 98  
 FLASH LINE 99  
 FLASH LINE 100

The Flash BRT extension has been recognized as a regional transportation priority at the Federal level. Maryland's Congressional Delegation—led by then-Senator Ben Cardin, Senator Chris Van Hollen and Congressman John Sarbanes— secured \$4.1 million in federal funding to support the project in Fiscal Years 2023 and 2024. This includes \$3.35 million in Congressionally Directed Spending awarded to Montgomery County for the purchase of new Flash buses, and \$750,000 in 2023 for Howard County for the design and construction of new BRT stations. Howard County also has committed approximately \$3 million in local funding to support station construction and the acquisition of BRT vehicles.

#### Federal and Local Leaders Praise the Flash Expansion:

- **Senator Chris Van Hollen** – “Expanding Marylanders’ access to public transportation helps connect our communities and opens more doors of opportunity. That’s why we fought to deliver \$4 million in federal funding to help Howard and Montgomery Counties expand their public transportation partnership to serve more residents – bringing the region together and boosting our economy.”
- **Senator Angela Alsobrooks** – “Team Maryland continues to drive economic progress and invest in our communities. I am proud that the US 29 Flash Bus Rapid Transit Service Extension project is officially launched and know that this fast, reliable transit system will serve Howard and Montgomery counties for generations to come. I want to thank County Executives Ball and Elrich for their tireless work on behalf of our communities.”
- **Congresswoman Sarah Elfreth** – “The expansion of the US 29 Flash Bus Rapid Transit Service into Howard County is a terrific example of strong local and federal partnership. With new stops in Maple Lawn, Downtown Columbia and the Johns Hopkins Applied Physics Laboratory, we are investing in our local economy and workforce by connecting Marylanders to even more workplaces and businesses. This is Team Maryland at its best: local, state and federal colleagues working together to deliver federal funding for high-quality transit solutions that meet the needs of our community.”
- **Joe McAndrew, Assistant Secretary for Planning and Project Development, Maryland Department of Transportation** – “MDOT is proud to support the Flash's extension into Howard County along US 29, a vital economic corridor. This bus rapid transit expansion will improve the commutes of many Maryland workers along the busy corridor and will help move more people safely, efficiently and reliably. The extension along a State Highway right of way shows the Moore Administration’s commitment



to working together with local governments to leverage our roads to prioritize and efficiently connect people and goods to their end destination.”

- **Erik Johnson, Chief of Staff, Johns Hopkins Applied Physics Laboratory** – “APL is Howard County’s largest private employer, and just under half of our nearly 9,000 staff members live in and commute to the Lab from Howard and Montgomery counties. This expansion is a great example of governments, businesses and communities working together to deliver improved infrastructure for the amazing people and innovative companies that call Howard County, Montgomery County and Maryland their home. I am confident that it will get ample use by our staff members, and that other local businesses and organizations – and the folks who work there – will benefit from this new line as well.”
- **Clarence Dickerson, III, Administrator of the Howard County Office of Transportation** – “Through collaborative efforts between Howard County and Montgomery County, we are excited to bring this over a decade-long project to fruition. We will enhance services by integrating real-time transit information, which will benefit both riders and local businesses, along with raised platforms for boarding, prefabricated transit shelter, bike racks, seating and lighting. The US 29 Flash Extension is a vital project that will improve connectivity within both communities.”

## **Statement by County Executive Marc Elrich on the Death of Ride On Bus Operator Ruiz Bell**



"I was very saddened to learn about the death of Ruiz Bell, a longtime Ride On bus operator who died the morning of Thursday, May 1 after suffering a heart attack while on the job.

Mr. Bell was behind the wheel of the southbound Route 55 bus when it happened, and even in that moment, he was thinking about the people around him — bringing the bus to a safe stop and preventing what could have been an even greater tragedy. That kind of calm under pressure tells you a lot about the person he was.

Ruiz had been with the County since 2012 and was a proud MCGEO shop steward. He showed up every day for his job, for his riders and for his coworkers. People knew him for his humor, his kindness and the way he made the workday a little lighter — not because he had to, but because that's who he was.

He leaves behind his wife and ten children, six girls and four boys. This is a devastating loss for them. They won't ever again get to see him enjoy a victory by his favorite football team or grill for his family in Gaithersburg. He was just 63 years old. Along with Ruiz's wife and his children, his coworkers at the Montgomery County Department of Transportation are also grieving. Everyone who had the privilege of knowing him will certainly feel this loss. I also want to thank the bus riders who tried to help him, this is a traumatic event for them as well. Please keep everyone impacted in your thoughts and remember that this will be a hard time for our entire transit team."

## **Montgomery County Executive Marc Elrich and County Council President Kate Stewart Celebrate the 50th Anniversary of Ride On Bus Service**



Montgomery County Executive Marc Elrich, County Council President Kate Stewart, other Councilmembers and Federal and State officials celebrated the Montgomery County Department of Transportation (MCDOT) Ride On bus system's [50<sup>th</sup> Anniversary](#) on Friday, May 2 in Wheaton.

Speakers also included Maryland Senator Jeff Waldstreicher, Maryland Delegate Linda Foley, Maryland Delegate Jared Solomon, MCDOT Director Chris Conklin, Maryland Department of Transportation Assistant Secretary Joe McAndrew, Washington Metropolitan Area Transit Authority Chief Transportation Officer Leroy Jones, Ride On bus operator Ted Oliver, who has been with Ride On for 46 years and lifelong Ride On bus rider Susanne Brunheart-Wiggins.

“Ride On has helped people get where they need to go for 50 years,” said County Executive Elrich. “Ride On has evolved into one of our nation’s largest bus systems and an essential transit system for thousands of County residents, commuters and visitors who count on this service. I appreciate the operators and staff who show up every day to keep it running. I wish MCDOT and Ride On a happy 50th anniversary, and I look forward to the future as we build and integrate Bus Rapid Transit into our service offerings.”

The event showcased wrapped, decorated buses, historical photos of Ride On buses and the artwork from a [middle school art contest](#). The contest received 96 student submissions, with 24 students from Herbert Hoover Middle School contributing 25% of the total entries. [Winners of the contest](#) were announced during the celebration:

- 1st Place Winner: [Laura Jin](#), Dr. Martin Luther King, Jr. Middle School
- 2nd Place Winner: [Ava Lutgendorf](#), North Bethesda Middle School
- 3rd Place Winner: [Jenny Gong](#), Rocky Hill Middle School

“Ride On provides 65,000-weekday passenger pickups, is the second largest in the region, operates seven days a week and provides over 80 routes with 5,425 bus stops,” said Conklin. “Public transportation is not just about moving people—it’s about connecting our communities and expanding opportunity. It plays a critical role in reducing disparities, supporting economic growth and ensuring that every resident, regardless of background, can access the resources they need to succeed.”

In addition to the standard Ride On bus service operating throughout the County, Ride On services also include:

- Ride On [extRa](#), a limited stop, high-frequency service on Route 355/Rockville Pike and the Pink and Lime routes servicing the Great Seneca area, including the Shady Grove Life Sciences Corridor.
- Ride On [Flex](#), an on-demand transit service in designated Rockville and Glenmont/Wheaton zones.

- [Flash Bus Rapid Transit \(BRT\)](#) service which runs along US 29/Colesville Road between Downtown Silver Spring and Briggs Chaney/Burtonsville. The County has plans to expand Flash to provide upgraded, high-frequency service to interconnect the County through a Flash Network.

High-frequency transit such as the planned Flash Bus Rapid Transit Network and Ride On extRa services were highlighted as the future of Montgomery County's transit system.

"For many of our residents, public transit has the power to create possibility and progress," said Montgomery County Council President Stewart. "Ride On gives individuals the opportunity to move about the County for work, to shop and run errands, and explore all the County has to offer. Every trip on public transportation also means one less car on the road and a better environment for all. Congratulations to the first 50 years of Ride On and cheers to continued investments in public transportation."

The Council Transportation and Environment Committee Chair, Evan Glass, acknowledged the County's public transportation equity impacts.

"Public transit is the great equalizer," said Councilmember Glass. "For five decades, Ride On has enabled families to thrive by providing equal access to jobs, education and childcare. Our bus network has been a cornerstone of progress in Montgomery County and will continue helping uplift and shape our community."

## Ride On Annual 'Give and Ride Food Drive' to Run from May 25 – May 31



The Montgomery County Department of Transportation (MCDOT) and Manna Food Center are hosting the 32nd Annual "Give and Ride Food Drive" from Sunday, May 25, to Saturday, May 31. MCDOT is asking for donations of non-perishable food



items on any MCDOT Ride On bus or at designated drop off sites. County bus riders who make a donation will have their bus fare waived.

Non-perishable food items can be dropped off on all Ride On, extRa, Flex and Flash buses or at the five participating Montgomery County Public Libraries, Wheaton Headquarters Building, the Executive Office Building and the Council Office Building.

Participating drop off locations, aside from all County buses, include:

- Davis Library, [6400 Democracy Boulevard](#), Bethesda.
- Gaithersburg Library, [18330 Montgomery Village Avenue](#), Gaithersburg.
- Long Branch Library, [8800 Garland Avenue](#), Silver Spring.
- Leggett Executive Office Building, [101 Monroe Street](#), Rockville.
- Olney Library, [3500 Olney-Laytonsville Road](#), Olney.
- Stella Werner Council Office Building, [100 Maryland Avenue](#), Rockville.
- White Oak Library, [11701 New Hampshire Avenue](#), Silver Spring.
- Wheaton Headquarters Building, [2425 Reedie Drive](#), Wheaton.

[Manna Food Center](#) is a leader in the fight against hunger and food waste in Montgomery County. Through innovative partnerships and solutions, Manna collects food and delivers it to families in need through pop-up pantries, school-based programs, education and community food rescue and a Farm to Food Bank program.

Manna Food's [website](#) lists the following items as high need: instant oatmeal, brown rice, whole grain pasta, canned tuna, beans, shelf-stable milk boxes, cooking oils and spices.

Learn more about much needed items as well as all drop-off locations [here](#).

## A MUST READ: Ride On Reimagined and Upcoming Service Changes on June 29, 2025 - Frequently Asked Questions



Montgomery County's Department of Transportation (MCDOT) is preparing to launch a major transformation of the Ride On bus system through the [Ride On Reimagined Service and Implementation Plan](#). This plan marks the most comprehensive update in Ride On's history and is a result of years of planning, community input, and coordination with our regional partners. Ride On's usual May service change has been moved to June 29, 2025 to ensure a seamless rollout and better alignment with the implementation of WMATA's Better Bus Network, also launching June 29. The new transportation network will introduce streamlined, better connections to Metro, as well as adjustments based on public feedback and travel patterns.

Ride On has released a [comprehensive list of Frequently Asked Questions \(FAQs\)](#) to help riders understand what's changing, why it's happening, and how it may impact their commutes. Riders will notice new routes, discontinued or modified routes, and new travel options designed to reduce wait times, and improve reliability and access to jobs, schools, medical centers, and other essential destinations.

MCDOT will discontinue Route 10, adjust routes 34, 41, 42, and introduce new Route 40, while WMATA adjusts routes L8 and T2. WMATA will replace the Route 10 with Metrobus routes M12, M42, M44, and M60. **Riders are encouraged to study these changes carefully and plan trips accordingly.**

The changes reflect a shift of resources to allow for more reliable service where demand is higher. You may start to see new signs at bus stops which will continue to show the current bus service, along with the new bus route names that will go into effect.

The FAQs cover key topics such as:

- **New Route Numbers and Changes:** Which routes are being renamed, combined, or discontinued.
- **Service Frequency:** How often buses will arrive.
- **Route Discontinuation:** Explains decisions based on ridership data, duplication with other services, or better alternatives being introduced.
- **Metrobus Integration:** Details on how Ride On coordinated with WMATA to enhance regional connections.

Learn more about how these changes may affect you by reviewing Ride On's public forum [final summary of changes](#) and the [full list of Frequently Asked Questions](#) (FAQs). The new schedules will be available at [RideOnBus.com](#) by May 19 and in print starting June 15. The full details for Metrobus changes can be found at [Metro's New Bus Network Is Coming June 29 | WMATA](#). WMATA's Frequently Asked Questions for these changes can be found at [Frequently Asked Questions | WMATA](#).

Ride On thanks you for continuing to choose us for ride after ride and we look forward to welcoming you aboard the next generation of service starting June 29. Plan your trip and get real time bus arrival information with the [Ride On Trip Planner](#).

## Ride On Senior Corner: Ride On Highlights Transportation Options for Seniors This Older Americans Month



Celebrated every May, Older Americans Month (OAM) is led by the Administration for Community Living (ACL). Established in 1963, OAM is a time to recognize older Americans' contributions, highlight aging trends, and reaffirm commitments to serving the older adults in our communities.

This year's theme, "Flip the Script on Aging," focuses on the importance of combating ageism to transform how society perceives, talks about, and approaches aging by challenging stereotypes and highlighting the benefits of healthy aging. At Ride On, providing accessible transportation is a top priority. Ride On and our partner organizations strive to provide resources for older adults which allows them to remain active, engaged members of our community for as long as possible.

### **Free Rides for Older Adults**

Ride On offers residents aged 65+ or with disabilities [free rides](#) all day on all MCDOT Ride On buses, including Ride On extRa, Ride On Flex, and the Flash. Seniors should get the Senior SmarTrip card from any public library, TRiPS store, or the County Treasury office. Seniors may also use their Reduced Fare SmarTrip® photo ID card (formerly Metro Disability ID card), Medicare card with a current photo ID, or a MetroAccess card. These cards may also be used for free rides on most Metrobuses within the county.

**Bethesda Circulator Bus** is a free way to get around Bethesda running every 10-15 minutes, Monday-Friday 7 am to 11 pm. For more information, visit <https://www.bethesda.org/> or call 301 215-6660.

**Silver Spring VanGo Circulator** or Ride On Route 28 is a free circulator that provides easy access to Downtown Silver Spring. The circulator runs every 30 minutes Monday - Saturday. For more information, visit the VanGo timetable [webpage](#).

**Bethesda Transportation Solutions** gives Bethesda residents transportation options including Ride On buses, Metrorail/Metrobus, MARC Train & more. For more information, visit <https://www.bethesda.org/> or call 301 656-0868.

**Senior Connection** provides free escorted transportation services to Montgomery County's older adults over 60 through a growing network of volunteers. For more information, visit [www.seniorconnectionmc.org](http://www.seniorconnectionmc.org) or call 301 962-0820.

**Connect-A-Ride** is a free referral service that provides Montgomery County adults over 50 and adults with disabilities information about their transportation options for medical services, errands, social activities and more. If you or a family member are a resident of Montgomery County and need transportation assistance, contact Connect-A-Ride at 301-738-3252 or [ConnectARide@AccessJCA.org](mailto:ConnectARide@AccessJCA.org).

### **Senior Center Transportation**

Montgomery County Recreation collaborates with Ride On to provide curb-to-curb and fixed route transportation to five of our Senior Centers and two Active Adult



Program locations. This free service is available to County residents 55 and over residing within the service area for the centers. If you are interested, please call your local Senior Center or the Senior Programs Team at 240-777-4925 for more information. Senior Centers in this program include Damascus, Holiday Park, Long Branch, Schweinhaut, and White Oak. Transportation is provided for Active Adult Programs at Germantown and North Potomac.

### **Transportation from Senior Facilities to Grocery Stores**

Ride On, through a partnership with Montgomery County Health and Human Services, provides weekly transportation from various senior living facilities to local grocery stores. This valuable service helps Montgomery County seniors to remain independent while providing an enjoyable weekly outing with their fellow residents. The pickup schedule is as follows:

Tuesday: Rebecca House / Potomac

Wednesday: Arcola Tower / Silver Spring

Friends House / Sandy Spring

Lakeview House / Bethesda

Randolph Village / Silver Spring

Friday: Elizabeth House / Silver Spring

Forest Oak Towers / Gaithersburg

Inwood House / Silver Spring

Leafy House / Silver Spring

Londonderry Towers / Gaithersburg

### **Travel Training with Jewish Council for the Aging (JCA)**

The Jewish Council for the Aging regularly schedules Travel Training Seminars, often through local senior centers. The seminar includes rides on a Metro train and Ride On bus, and seniors receive hands-on practice loading a fare card, understanding transit schedules, creating a travel itinerary and "meeting new friends".

The next seminar will be held on Friday, June 6, at Holiday Park Senior Center (3950 Ferrara Dr, Silver Spring, MD 20906), at 10 a.m. Space is limited; participants **MUST** register in advance for the workshop. Call Connect-A-Ride at 301-738-3252 to learn more and register. Travel Training is provided by the Jewish Council for the Aging with funding from the Montgomery County Department of Transportation.

## Take Ride On to Local Gardens



The weather is warming up and the flowers are blooming; it's the perfect time to enjoy gardens in Montgomery County! Gardens are the perfect place to enjoy the beauty of nature, get some fresh air, and even get a little exercise.

Whether you're looking for a garden Up County or closer to the District line, Ride On provides a reliable way to get there. Remember, Ride On riders with disabilities, age 65+, or under age 19 ride for free 24/7, 365. For more information on discounted fares for these audiences, visit [here](#).

- **[McCrillis House & Gardens](#):** McCrillis Gardens is a naturalistic garden offering shady woodland walks and splashes of color, especially in spring. Tucked into a residential neighborhood in Bethesda, the gardens feature paths that wind through the remarkable collection of ornamental trees and shrubs, along with bulbs, groundcovers and shade-loving perennials that add year-round color and texture. To get to McCrillis House & Gardens, take Ride On Route [36](#) or [47](#).
- **[Brookside Gardens](#):** Brookside Gardens is Montgomery County's incomparable, award-winning 50-acre public display garden within Wheaton Regional Park. Included in the gardens are several distinct areas, including the Aquatic Garden, Azalea Garden, Butterfly Garden, and Children's Garden, among others. Brookside Gardens also features two conservatories for year-round enjoyment. Admission to the gardens is free. Ride On Routes [9](#), [10](#), or [31](#) can take you close to this beautiful outdoor oasis.
- **[Schwartz Peony Garden at Seneca Creek State Park](#):** Within the expansive 6,300 acre Seneca Creek State Park is the Schwartz Peony Garden and wild peony field. The peonies in both the garden and field (located adjacent to one another) bloom early to mid May. Signs directing visitors to the peonies can be found within the park. Entrance fee is \$3 per person on weekends

and free on weekdays. To visit this one-of-a-kind spot, take Ride On routes [61](#), [71](#), [74](#), or [78](#) to Seneca Creek State Park.

- **[Glenstone Museum](#):** Glenstone Museum planted trees, understory vegetation and groundcover flora as part of the reforestation efforts at the grounds. From 2013–2018, Glenstone planted more than 13,000 trees, in addition to thousands of shrubs, annual and perennial grasses, and flowers. Selected plants are all native and regionally appropriate to conserve the most resources. To get to Glenstone, take Ride On Route [301](#) for free guaranteed entry.
- **[Woodend Nature Sanctuary](#):** Woodend Nature Sanctuary is a peaceful 40-acre oasis for experienced nature lovers and new explorers of all ages and abilities. Their new wheelchair-accessible nature trail traverses meadow, forest, stream, and pond habitats. The sanctuary is free and open to the public every day of the year from dawn to dusk. To get to Woodend Nature Sanctuary, take Ride On Route [33](#).

## **Of Note**

### **Memorial Day Holiday Transportation Schedule for Monday, May 26**

Below is the transportation-related holiday schedule for Memorial Day, Monday, May 26.

- County offices - Will be closed.
- Ride On bus service - Will operate on a [Sunday schedule](#).
- Ride On extRa [Pink](#) and [Lime](#) - Will operate on a Sunday schedule.
- Ride On [extRa](#) (Route 101) and [Flex](#) bus service - Will not be in service.
- Ride On [Flash](#) bus service - Will operate on a Weekend/Holiday schedule ([Orange Route only](#)). The [Blue Route](#) (typically, weekday only) will not be in service.
- TRIPS Commuter [Store](#) at Silver Spring Transit Center - Will be open 10 a.m.-4 p.m.
- TRIPS Mobile Commuter [Store](#) - Will be closed.
- Parking at Bethesda, Silver Spring and Wheaton public garages, lots and curbside meters - Will be [free](#).

- [Metrorail](#) service - Will operate on a Sunday schedule from 7 a.m. to midnight. View timetables at [wmata.com/schedules/timetables](http://wmata.com/schedules/timetables).
- [Metrobus](#) service - Will operate on a Sunday schedule. View timetables at [wmata.com/schedules/timetables](http://wmata.com/schedules/timetables).
- [MARC Train](#) - Not in service. For more information visit [mta.maryland.gov/marc-holiday-service](http://mta.maryland.gov/marc-holiday-service).
- MTA [Commuter](#) Buses - Not in service except for Route 201 which will operate on a [Weekend/Holiday](#) schedule.

### **Silver Spring VanGo, Bethesda Circulators and Free Shuttles for Seniors**

Did you know that Montgomery County has two free circulators? The VanGo Circulator, or Ride On [Route 28](#), makes traveling through Downtown Silver Spring easy and convenient. Buses run every 30 minutes and serve Silver Spring's art district as well as community and health centers, lodging, shopping, and transportation connections. Visit [here](#) for more details.

The Bethesda Circulator connects riders to 8 public parking garages, the Bethesda Metro Station and 20 convenient stops along the way that get you to and from your favorite Bethesda destination - all for free! Three circulators on route arrive at each stop every 10-15 minutes. Visit [here](#) for more details.

MCDOT also provides free shuttles to recreation centers, shopping, and medical appointments for some senior populations. Shuttles provide point to point service while circulators travel a specific route with multiple bus stops.

### **Transit Advisory Group is Recruiting!**

The Transit Advisory Group is actively recruiting new members! If you or someone you know is interested, especially those who are disabled, high school students or bilingual, please visit our TAG webpage [here](#) to apply to be a member. Your membership is free, and you will have a chance to make a difference within Montgomery County. Let your voice be heard!!

### **Plan Your Next Trip with the Ride On Trip Planner**

Have you downloaded the Ride On Trip Planner App yet? This new, innovative app allows riders to plan their next trip and to tell how crowded a Ride On bus is – before it arrives – with the crowdedness indicator on the app. Riders can choose if they want to get on the arriving bus, wait for the next bus depending on how many people are on the bus, or choose another travel option, such as other local transit services, bikeshare, and scooter. It gives riders more control over their transportation experience. The Ride On Trip Planner app is easy to use and can be



downloaded from the [Google Play](#) or [Apple](#) app store, or accessed with our [desktop version](#).

### **Transit Trivia!**

Test your familiarity with Ride On's routes, services, and more with our transit trivia! The answer will be in next month's edition of our newsletter so make sure you tune in next month to see if you answered correctly!

#### **Question:**

Which annual event in May encourages commuters to ditch their cars and use bikes or public transportation to promote a better environment and healthier lifestyle?

1. Earth Day
2. Car Free Day
3. Bike to Work Day
4. World Environment Day

#### **Last month's question:**

What year does Ride On plan to have fully transitioned to a zero-emission bus fleet?

1. 2026
2. 2029
3. 2030
4. 2035

Answer: (4.) 2035

For the most up-to-date service information, riders should follow @RideOnMCT on [X](#), [Facebook](#), [YouTube](#), [Bluesky](#), and [Instagram](#). In addition, information is available at RideOnBus.com, by subscribing to receive email alerts at [www.montgomerycountymd.gov/govdelivery](http://www.montgomerycountymd.gov/govdelivery), or texting MONTGOMERY RIDEON to 468311 to receive text alerts.

For information on MCDOT programs and services visit [montgomerycountymd.gov/mcdot](http://montgomerycountymd.gov/mcdot), follow @MCDOTNow on [X](#), [Facebook](#), [Bluesky](#) and [Instagram](#) and [subscribe](#) to MCDOT's "Go Montgomery!" newsletter.

If you need an Americans with Disabilities Act (ADA) reasonable accommodation to access Ride On bus service, contact MC311 by voice at 240-777-0311, by email [RideOn.CustomerService@montgomerycountymd.gov](mailto:RideOn.CustomerService@montgomerycountymd.gov) or TTY 711.

Title VI: Montgomery County assures that no person shall, on the grounds of race, color, or national origin, as provided by Title VI of the Civil Rights Act of 1964 and the Civil Rights Act of 1987, be excluded from the participation in, be denied the benefits of, or be otherwise subjected to discrimination under any program or activity.